



350 S. St. Charles St. Jasper, In. 47546  
Ph. 812.482.2932 Fax 812.634.6632  
[www.ridetech.com](http://www.ridetech.com)

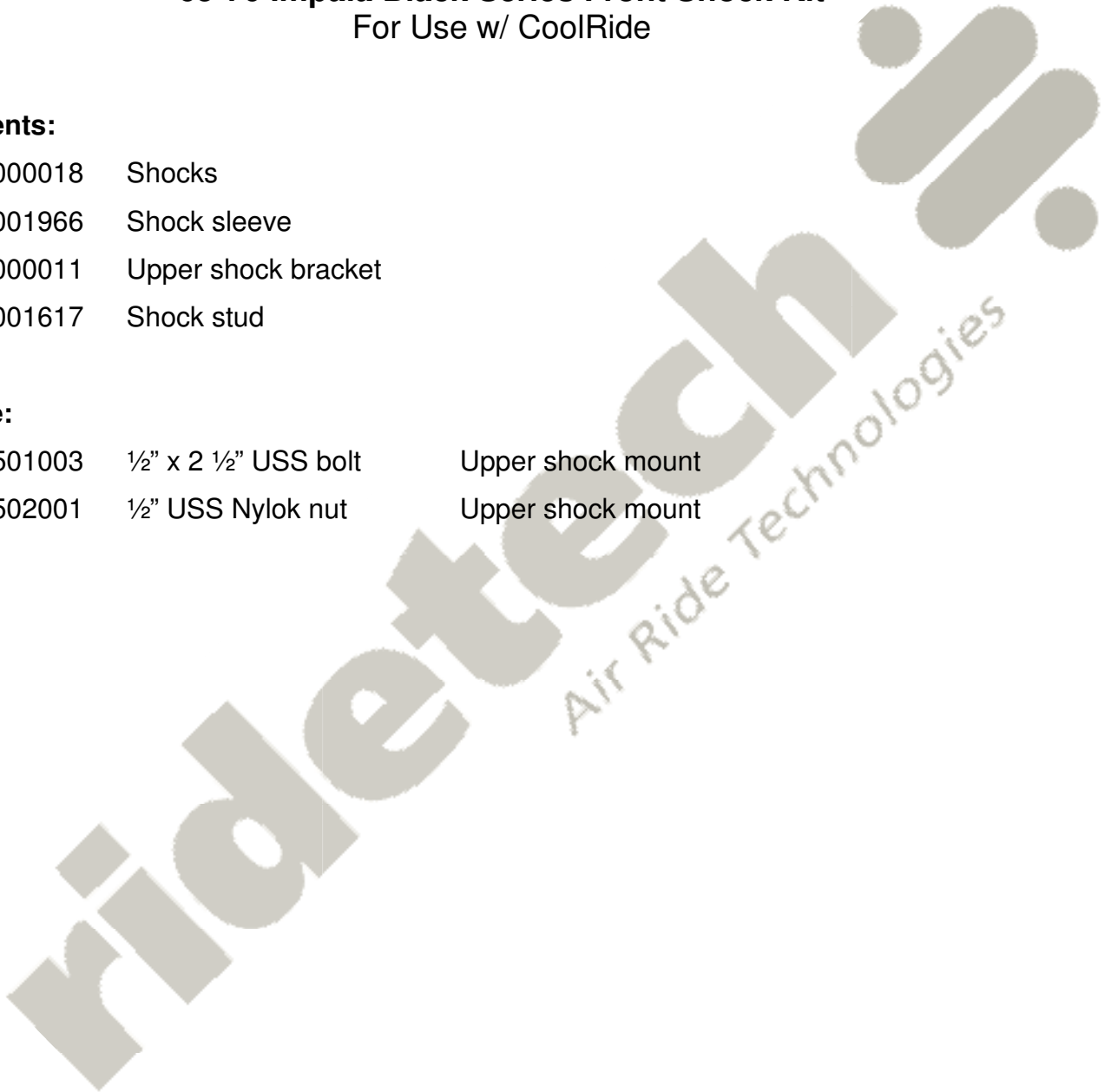
**Part # 11280500**  
**65-70 Impala Black Series Front Shock Kit**  
For Use w/ CoolRide

**Components:**

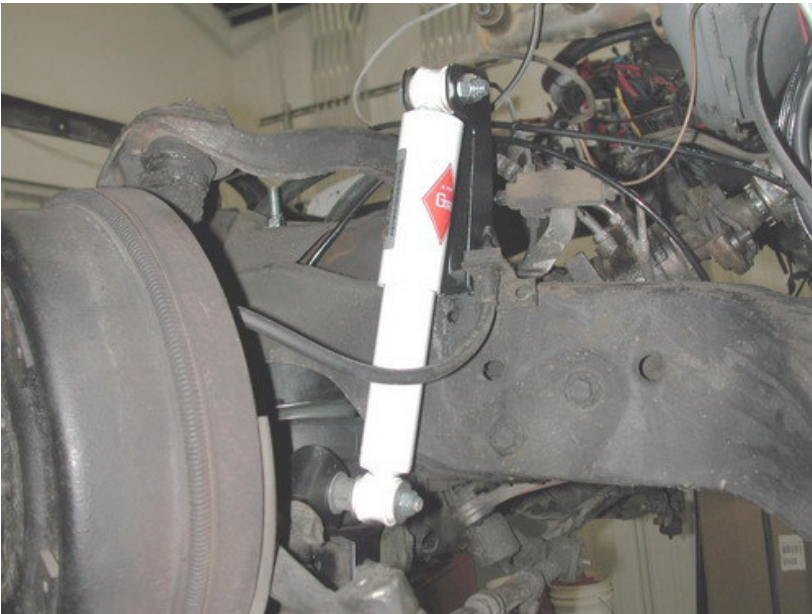
2	20000018	Shocks
2	90001966	Shock sleeve
2	90000011	Upper shock bracket
2	90001617	Shock stud

**Hardware:**

2	99501003	1/2" x 2 1/2" USS bolt	Upper shock mount
2	99502001	1/2" USS Nylok nut	Upper shock mount



## Installation Instructions



1. The upper shock mount must be welded to the frame. It may need to be cut down to match the stroke of the air spring and suspension. Make sure that when the suspension is fully compressed the shock is about 1/4" from being fully compressed. Just tack weld the mount for now and install the lower shock stud and shock. The upper mount will use a 2 1/2" x 1/2" bolt and nyloc. **Check to make sure the shock does not bottom out when the suspension is fully compressed.** If the shock bottoms out it could damage the shock or shock mounts.